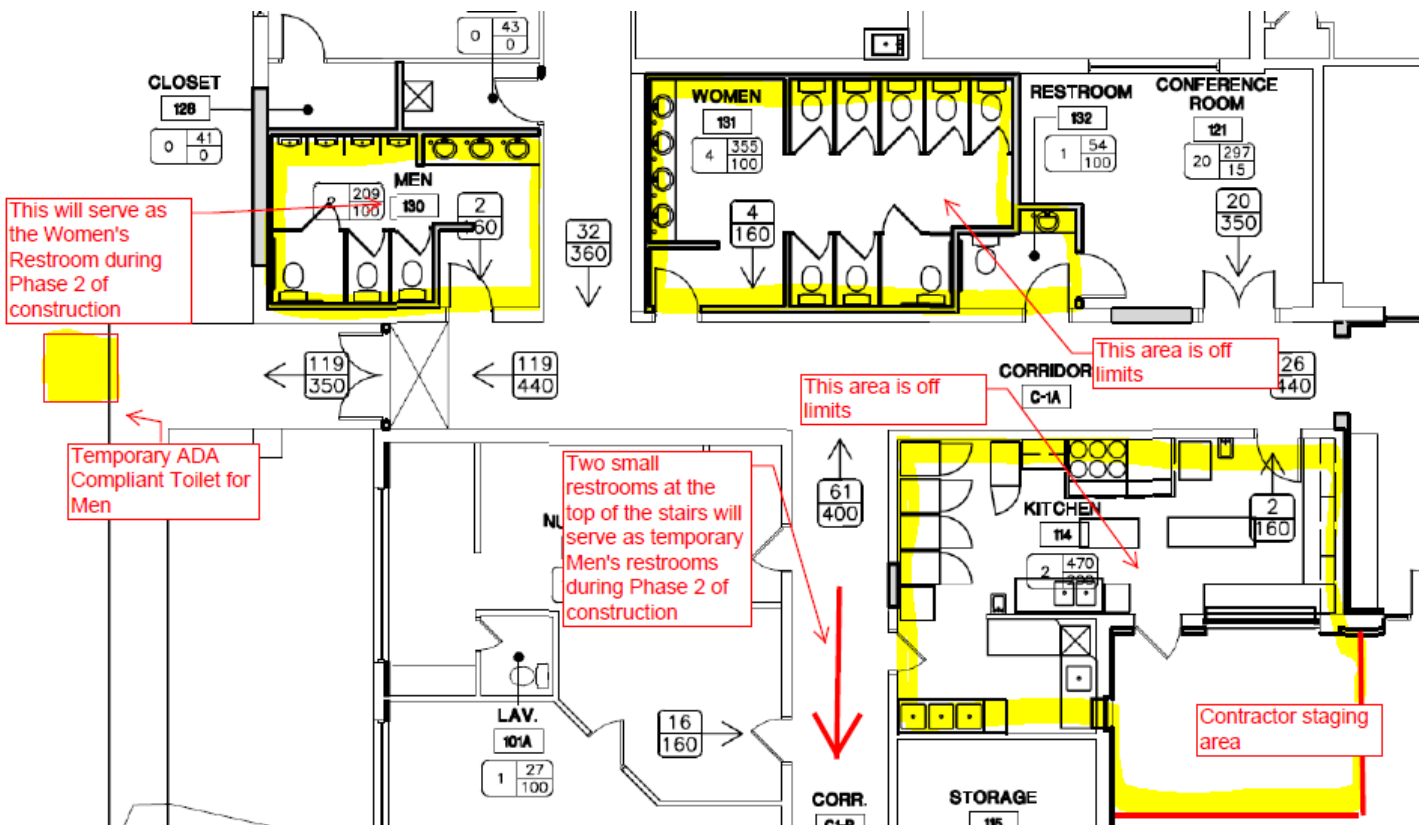


SUMC Weekly Construction Update

- On Monday, April 3, we will continue Phase 2 work on the ladies' restroom and kitchen so these areas will continue to be off limits. Phase 2 will take approximately 8 weeks to complete. During this time, the new Men's Restroom will serve as a temporary Women's Restroom and the two existing Restrooms on the 2nd floor will serve as temporary Men's Restrooms. Since the temporary Men's Restrooms are not ADA (American with Disabilities Act) accessible, we must provide an ADA compliant facility for the Men. The ADA temporary toilets are located outside on the sidewalk by the west side glass doors.



- We will have signage in place. Please familiarize yourself with our plan and if you see a confused visitor, please help them. We appreciate your patience and help as we make our way through Phase 2.
- The Parlor will also be off limits for a few weeks.