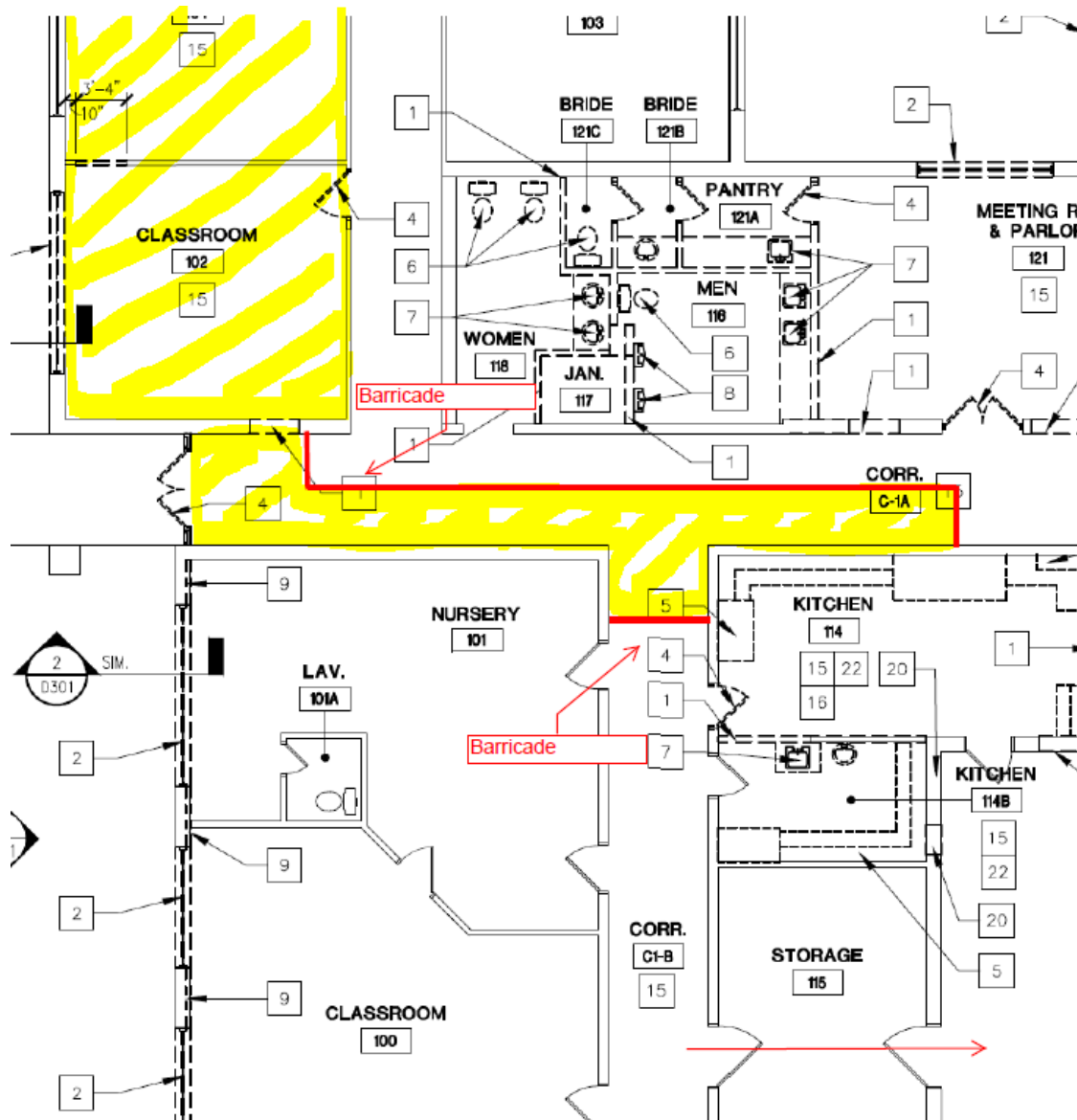


Construction for the week of February 13, 2017

- **Classrooms 102 and 104 and a portion of hallway outside of the existing restrooms will be off limits.** We will be installing plumbing lines under the concrete slab from the new bathroom to a connection point near the existing water fountain. We will keep access to the restrooms open at all times but **if you are coming from the classrooms on the south side of the building, you will need to come through the storage room and Gallihugh Hall to get to the main hallway.** We will erect the barricade Monday morning and remove it by the end of the day on Friday. This hallway will be fully accessible by the following weekend.



- The ceiling replacement in the Narthex is mostly complete. The new light fixtures have not yet arrived. There will be minor work happening (drywall patching, etc.) but the Narthex will be fully accessible at all times.